



Polyurethane



www.shiwei.com.au

Polyurethane is a new polymer composite material somewhere between rubber plate and plastic plate; it possesses the high strength of a plastic and the high elasticity of rubber. Polyurethane liner has applications in the cement, building, metallurgical, coal and mining industries, and features:

A wide hardness range. Even when polyurethane is very hard, it still retains the elongation and resilience of rubber. The hardness range of polyurethane elastomer is Shore A10-D80.

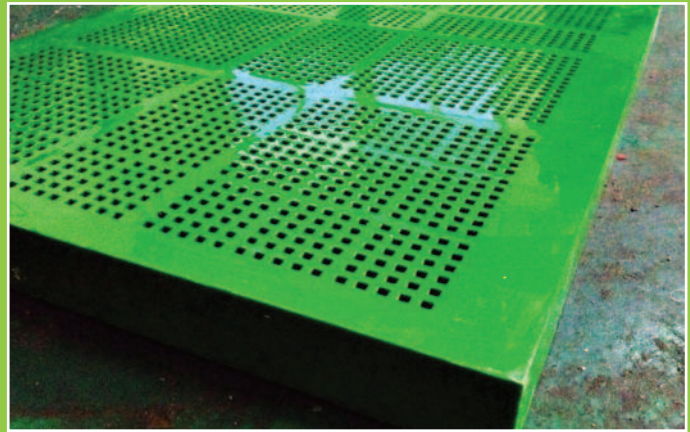
High strength. At the hardness of rubber, the breaking strength and load carrying capacity of polyurethane are much higher than those of standard rubber. At a high hardness, the impact strength and bending strength of polyurethane are much higher than those of plastics.



Wear resistance. The wear resistance of polyurethane is excellent, usually within $0.01-0.10(\text{cm}^3)/1.61\text{km}$, or about 3-5 times of that of rubber.

Polyurethane elastomer is a strong polar polymer compound, having a small affinity with non-polar mineral oil, and is hardly eroded at all by fuel oil or machine oil.

With its good vibration absorption, polyurethane can play a role in reducing vibrations and buffering, and can replace rubber and springs in the mold making industry.



Polyurethane



Efficient thermal performance

Polyurethane can be produce into Heavy duty screen in both wet/dry processing environment. It can also be design to suit a dewatering screen environment for gravel, crushed aggregates, mineral sands, hard rocks, precious metals, coal, iron ore, salt and various granular material.

Polyurethane can also be produce into conveyor belt scraper/cleaner.

www.shiwei.com.au